

# EBM Products Designed to Support Your Optimal Health

*A Patient's Guide*



# ABOUT EBM MEDICAL

## Our Commitment to You

To provide access to affordable products and services that are either not covered by health insurance or have high out-of-pocket costs.

## Excellent Customer Service

EBM Medical continues to make service our number-one priority. Our dedicated team of licensed pharmacy technicians provides personalized service that you deserve.



**PharmD Consulting**



**Guaranteed Pricing**



**Patient Education Resources**



**Automated Refill Management Program**



**Flexible Payment Options**



**FREE Shipping**



# INDEX

PAGE

About Medical Foods.....2-3

## Vascular and Neuropathic Conditions

EB-N3® Medical Food..... 4-5  
EB-N5® Medical Food..... 4-5  
EB-N6® Medical Food ..... 4-5

## Musculoskeletal Conditions

EB-S4® Medical Food.....6-7

## Nail Health

EB-L1® Medical Food ..... 8-9

## Pain and Inflammation

EB-A7® Medical Food..... 10-11

## Wound Healing

EB-MATRIX™ Medical Food.....12-13

## Immune System Modulation

EB-V1® Medical Food..... 14-15

## Foot Care

About Foot Care.....16-17  
EB-M4® Topical Cold Therapy ..... 18-19  
EB-PRO 13® Diabetic Foot Protectant ..... 20-21  
About Plantar Fasciitis ..... 22-23  
Plantar Fasciitis Kit ..... 24-25

## Health and Wellness

About Cannabidiol (CBD/CBG)..... 26-27  
EB-C4/C5 Broad-Spectrum CBD/CBG ..... 28-29  
EB-C1 Sublingual CBD/CBG Oil Tincture.....30-31

## Individualized Medicine

Specialty Topicals..... 32-33

Next Steps .....Back Cover

# MEDICAL FOODS

## Peripheral Neuropathy



## Wound Healing

## Pain and Inflammation

## Bone Healing



## Nail Disorders

## Immune System

## About Medical Foods



Medical foods are considered a unique category regulated by the FDA. Medical foods can help manage chronic conditions by addressing the metabolic deficiencies associated with diseases. They are intended for use under medical supervision.



**EBM uses only pharmaceutical-grade ingredients.**

## Medical foods are beneficial for a variety of conditions, including:

- Mood disorders
- Cognitive disorders
- Migraines
- Peripheral vascular disease
- Peripheral neuropathy
- Diabetes complications
- Wound healing
- Osteoarthritis
- Chronic fatigue
- Fractures
- Rheumatoid arthritis
- Immune deficiency
- Heart disease





EB-N3® | EB-N5® | EB-N6®  
Delayed Release

PATHOLOGY OF PERIPHERAL NEUROPATHY

The active pharmaceutical-grade ingredients work synergistically to help normalize and optimize metabolic factors involved in peripheral nerve and vascular health.

INGREDIENTS

**EB-N3 / EB-N5 / EB-N6**  
All three unique formulations feature the following three key ingredients:  
**L-methylfolate calcium**..... **6 mg**  
**Methylcobalamin**..... **4 mg**  
**Pyridoxal 5'-phosphate** ..... **70 mg**

**EB-N3**  
Riboflavin .....1.3 mg

**EB-N5**  
Alpha-lipoic acid .....600 mg  
Cholecalciferol .....5000 IU

**EB-N6**  
Alpha-lipoic acid .....600 mg  
Benfotiamine .....300 mg

**Dosage**  
**EB-N3** Adult dose is 1 capsule daily or as directed by physician.  
**EB-N5 / EB-N6** Adult dose is 1 capsule twice daily with food or as directed by physician.  
AM and PM dosing is recommended.

Therapeutic Active Pharmaceutical Ingredient Guide

ACTIVE INGREDIENT	DESCRIPTION
<b>L-methylfolate calcium</b> [active folate as Biofolate®]	+ Nitric oxide and nerve blood flow - Homocysteine levels
<b>Methylcobalamin</b> [active vitamin B <sub>12</sub> ]	+ Peripheral nerve protein synthesis - Homocysteine levels
<b>Pyridoxal 5'-phosphate</b> [active vitamin B <sub>6</sub> ]	- Advanced glycation end-products - Homocysteine levels
<b>Riboflavin</b> [active vitamin B <sub>2</sub> ]	- Homocysteine levels
<b>Alpha-lipoic acid</b> [antioxidant]	+ Peripheral nerve blood flow - Oxidative stress
<b>Cholecalciferol</b> [active vitamin D <sub>3</sub> ]	+ Nerve growth factor
<b>Benfotiamine</b> [active vitamin B <sub>1</sub> ]	- Advanced glycation end-products

+ increase - decrease

Each vegan capsule is allergen- and dye-free.  
Manufactured in compliance with current Good Manufacturing Practices [cGMP].  
\*Products feature delayed-release capsules for targeted delivery to promote tolerability.  
*Actual product size and color may vary.*







## EB-S4®

**MAXIMIZE  
BONE DENSITY,  
OPTIMIZE  
SURGICAL  
OUTCOMES,  
AND AID  
BONE HEALING**

Approximately 50% of patients undergoing surgery are malnourished, which impairs healing rates and increases infection risk.

The active ingredients in EB-S4® work together to assist in bone healing and optimize surgical outcomes.

### INGREDIENTS

Calcium citrate..... 1200 mg  
Magnesium bisglycinate..... 500 mg  
Vitamin D<sub>3</sub>..... 10,000 IU  
Zinc bisglycinate ..... 50 mg

### Dosage

Adult dose is 3 capsules daily  
or as directed by physician.

### Therapeutic Active Pharmaceutical Ingredient Guide

ACTIVE INGREDIENT	DESCRIPTION
<b>Calcium citrate</b>	<ul style="list-style-type: none"> <li>+ Bone growth</li> <li>+ Nerve/muscle function</li> <li>- Bone loss</li> </ul>
<b>Magnesium bisglycinate</b>	<ul style="list-style-type: none"> <li>+ Vitamin D absorption</li> <li>+ Calcium absorption</li> <li>+ Bone density and health</li> </ul>
<b>Vitamin D<sub>3</sub></b>	<ul style="list-style-type: none"> <li>+ Calcium absorption</li> </ul>
<b>Zinc bisglycinate</b>	<ul style="list-style-type: none"> <li>+ Bone cell production</li> <li>+ Collagen production</li> </ul>

+ increase - decrease



Manufactured in compliance with current Good Manufacturing Practices [cGMP].

Actual product size and color may vary.





EB-L1®

MAXIMIZE  
OUTCOMES  
FOR BRITTLE,  
DISCOLORED  
NAILS

The active ingredients in EB-L1® work together to correct the metabolic deficiencies associated with nail strength, thickness, brittleness, and color.

Upon addressing your nutritional deficiencies with EB-L1, you may see an improvement in healthy nail growth, a decrease in nail breaking or splitting, and a positive overall change in nail appearance and color.

INGREDIENTS

- Biotin-D ..... 10 mg
- Cynatine™ HNS ..... 500 mg
- Hydrolyzed type-I collagen ..... 50 mg
- L-methylfolate calcium..... 0.5 mg
- Choline stabilized orthosilicic acid ..... 10 mg

Dosage

Adult dose is 1 capsule daily or as directed by physician.

Speak to your healthcare provider to see if EB-L1 would help improve the appearance of your hair, nails, or skin.

**LIVING SILICA®** Living Silica is a registered trademark of Silicium Laboratories LLC.



Manufactured in compliance with current Good Manufacturing Practices [cGMP].

Therapeutic Active Pharmaceutical Ingredient Guide

ACTIVE INGREDIENT	DESCRIPTION
<b>Biotin-D</b> [active Vitamin B <sub>7</sub> ]	+ Nail thickness and strength
<b>Cynatine™ HNS</b>	+ Nail strength, thickness, elasticity, moisture retention, and nail color
<b>Hydrolyzed type-I collagen</b>	+ Nail growth and strength
<b>L-methylfolate calcium</b> [active folate as Biofolate®]	+ Blood flow, nail growth, and nail color
<b>Silicon (LIVING SILICA® orthosilicic acid)</b>	+ Improved nail strength

+ increase

Each capsule is allergen and dye-free.  
*Actual product size and color may vary.*





**EB-A7<sup>®</sup>**  
**Delayed Release**

**MAXIMIZE  
OUTCOMES FOR  
CHRONIC  
INFLAMMATION  
AND  
OSTEOARTHRITIS**

The active ingredients in EB-A7<sup>®</sup> work synergistically for the metabolic management of deficiencies associated with the pain and inflammation of osteoarthritis without compromising the body’s immune system or increasing GI and CVD risk profile, unlike NSAIDs.

After your metabolic needs are met, you may begin to experience less pain and stiffness in your arthritic joints.

**INGREDIENTS**

- Turmeric curcumin 95%..... 750 mg
- SAM-e (S-adenosyl methionine)..... 600 mg
- Hyaluronic acid ..... 200 mg
- Boswellia extract 65% ..... 100 mg
- Hydrolyzed type-II collagen ..... 40 mg
- BioPerine<sup>®</sup> ..... 5 mg

**Dosage**

Adult dose is 3 capsules daily or as directed by physician.

**Speak to your healthcare provider if you want to eliminate or decrease the amount of NSAIDs required to manage your pain and inflammation.**



Manufactured in compliance with current Good Manufacturing Practices [cGMP].

\*Products feature delayed-release capsules for targeted delivery to promote tolerability.

**Therapeutic Active Pharmaceutical Ingredient Guide**

ACTIVE INGREDIENT	DESCRIPTION
<b>Turmeric curcumin 95%</b>	- Inflammation, pain, and stiffness
<b>SAM-e</b> (S-adenosyl methionine)	- Inflammation, pain, and stiffness
<b>Hyaluronic acid</b>	- Inflammation; slows the progression of osteoarthritis
<b>Boswellia extract 65%</b>	- Inflammation and pain
<b>Hydrolyzed type-II collagen</b>	- Pain and stiffness
<b>BioPerine<sup>®</sup></b>	+ Absorption of curcumin

+ increase - decrease

Each capsule is allergen and dye-free.

*Actual product size and color may vary.*







EB-MATRIX™

MAXIMIZE  
OUTCOMES  
FOR WOUND  
HEALING



EB-MATRIX™ is a medical food featuring a unique blend of key ingredients to help support wound healing and lower homocysteine levels, known to impair normal wound-healing processes.

Practical applications:

- Diabetic and lower-extremity ulcerations
- Surgical wounds
- Other acute and chronic wounds

INGREDIENTS

- L-arginine..... 7 g
- L-glutamine..... 7 g
- Collagen .....2.5 g
- Calcium beta hydroxybutyrate.....1.3 g
- Ascorbic acid.....350 mg
- Calcium citrate..... 200 mg
- Zinc bisglycinate chelate ..... 50 mg
- D-a-tocopheryl acetate ..... 30 mg
- Pyridoxal 5'-phosphate ..... 5 mg
- L-methylfolate calcium (Biofolate®) ..... 500 mcg
- Methylcobalamin..... 200 mcg

Dosage

Mix 1 scoop with 8-10 fl. oz. of juice or water and consume twice daily.



Manufactured in compliance with current Good Manufacturing Practices [cGMP].

Therapeutic Active Pharmaceutical Ingredient Guide

ACTIVE INGREDIENT	DESCRIPTION
HMB	+ Slows protein breakdown and enhances tissue growth
Arginine	+ Supports blood flow and vasodilation and builds proteins
Glutamine	+ Supports immune system and new tissue development
Collagen protein	+ Accelerates the rate of wound healing
B vitamins	+ Promotes effective homocysteine metabolism
Micronutrients	+ Aids in wound-healing processes and reduces infection risk

+ increase - decrease



**EB-V1<sup>®</sup>**  
**Delayed Release**

**IMMUNE SYSTEM  
OPTIMIZATION**

Speak to your  
healthcare provider  
to see if **EB-V1<sup>DR</sup>**  
can help your body's  
ability to fight  
off infection.

Nutritional deficiency greatly impairs proper functioning of the immune system.

The pharmaceutical-grade active ingredients in EB-V1<sup>®</sup> work together to provide the necessary nutrients to help correct the metabolic deficiencies associated with a compromised immune-system response.

**INGREDIENTS**

- Beta (1,3/1,6) glucan .....250 mg
- Elderberry extract ..... 600 mg
- Zinc bisglycinate ..... 40 mg
- Cholecalciferol (Vitamin D<sub>3</sub>) .....1000 IU
- Andrographis paniculata ..... 200 mg
- L-methylfolate calcium as Biofolate<sup>®</sup> ..... 1 mg
- Turmeric curcumin ..... 300 mg
- Green Tea Extract (50% EGCG) ..... 300 mg
- Quercetin ..... 100 mg
- Ascorbic acid..... 500 mg
- BioPerine<sup>®</sup> ..... 5 mg

**Dosage**

For adults and children 12 years and older, dose is up to 3 capsules daily with food or as directed by healthcare provider.

Each vegan capsule is allergen- and dye-free.

*Actual product size and color may vary.*

**Therapeutic Active Pharmaceutical Ingredient Guide**

ACTIVE INGREDIENT	DESCRIPTION
Beta (1,3/1,6) glucan	+ Activation of immune cells for immune system response
Elderberry extract	+ Blockage of viral proteins - Potential for viral transmission
Zinc bisglycinate	+ Development and growth of the innate immune system
Cholecalciferol (Vitamin D <sub>3</sub> )	+ Adaptive immune response to fight infection
Andrographis paniculata	+ Anti-inflammatory, immuno-stimulant, and antiviral response
L-methylfolate calcium as Biofolate <sup>®</sup>	+ Regulation of immune response
Turmeric curcumin	+ Anti-inflammatory and immunomodulatory response
Green tea extract (50% EGCG)	+ Innate and adaptive immune system functions
Quercetin	+ Anti-inflammatory and immunomodulatory response
Ascorbic acid	+ Antioxidant and anti-inflammatory response
BioPerine <sup>®</sup>	+ Nutrient absorption

+ increase    - decrease



Manufactured in compliance with current Good Manufacturing Practices [cGMP].

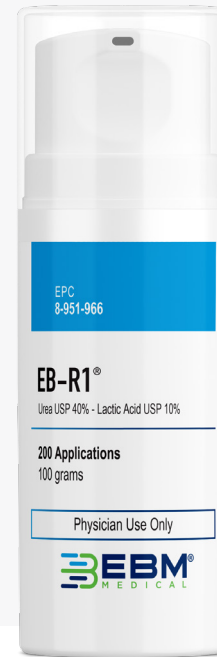
\*Products feature delayed-release capsules for targeted delivery to promote tolerability.

# TAKE CARE OF YOUR FEET

Each step you take involves a complex network of bones, muscles, tendons, and ligaments. This, combined with all of the weight they carry, explains why feet can have problems.

To keep your feet healthy:

- Examine your feet regularly
- Wear comfortable shoes that fit
- Wash your feet daily with soap and lukewarm water
- Never go barefoot
- Trim your toenails straight across and not too short. **Have your podiatrist trim your toenails if you have diabetes or can't reach your feet.**



## EB-R1®

### OPTIMIZE SKIN HYDRATION FOR ROUGH / DRY FEET

EB-R1 is a transdermal topical hydrating cream with skin softening properties to promote exfoliation for the management of xerosis (rough/dry feet).

#### INGREDIENTS

Lactic Acid .....10%  
Urea.....40%

#### Dosage

Apply 1 to 3 times daily on targeted affected area only. Spare healthy skin and wash hands after use.

ACTIVE INGREDIENT	DESCRIPTION
<b>Lactic Acid</b>	Hydrates and softens skin to promote exfoliation of rough/dry skin. - Helps with yellowing discoloration.
<b>Urea</b>	Hydrates and softens skin to promote exfoliation of rough/dry skin.

- decrease



Manufactured in compliance with current Good Manufacturing Practices [cGMP].





## EB-M4<sup>®</sup>

### ADVANCED COLD THERAPY FOR PAIN RELIEF

EB-M4<sup>®</sup> is a topical analgesic that can be applied to the skin providing temporary cooling relief for muscle aches and joint pain.

EB-M4 features a unique combination of menthol, camphor, and eucalyptus allowed to provide quick and long-lasting relief.

#### INGREDIENTS

Menthol.....	8%
Camphor .....	8%
Eucalyptus.....	2%

#### Dosage

Apply up to 1 gram to the affected area 1-4 times daily, or as directed by a healthcare provider.

*This product is for use on the skin only. Wash your hands after each application.*

#### Therapeutic Active Pharmaceutical Ingredient Guide

ACTIVE INGREDIENT	DESCRIPTION
<b>Menthol</b>	+ Stimulation of cold receptors
<b>Camphor</b>	+ Stimulation of local blood flow to activate nerve endings
<b>Eucalyptus</b>	+ Anti-inflammatory and antimicrobial effects

+ increase - decrease

- Clinically-proven ingredients provide fast and long-acting pain relief
- Topical therapy provides a cooling sensation and increased local blood flow to stimulate nerve endings
- Temporary cooling offers relief for sore muscles, aches and pains, and arthritis



Manufactured in compliance with current Good Manufacturing Practices [cGMP].



**EB-PRO 13®**  
**MAXIMIZE  
OUTCOMES  
FOR DIABETIC  
FOOT WOUNDS**

EB-PRO 13® is a non-greasy, multipurpose diabetic foot cream containing a clinical concentration of melaleuca alternifolia (13%) for the management of rough, dry diabetic skin.

**Practical applications:**

- Daily moisturizer
- Post-wound closure
- Relief from rough, dry, cracking feet
- Athlete’s foot, psoriasis, eczema

**INGREDIENTS**

Melaleuca alternifolia (tea tree oil) ..... 13%

**Dosage**

Apply up to twice daily to feet, nails, and web spacing between toes, or as directed by a healthcare professional. Do not use on open wounds or sores.



**Therapeutic Active Pharmaceutical Ingredient Guide**

ACTIVE INGREDIENT	DESCRIPTION
<b>Melaleuca alternifolia 13%</b> (tea tree oil)	<ul style="list-style-type: none"><li>+ Slow or prevent growth of microorganisms</li><li>+ Increase skin integrity</li><li>- Reduce inflammation</li></ul>

+ increase    - decrease

How is EB-PRO 13 different from other Tea Tree Oil products found over-the-counter?

- Complex manufacturing process to remove the oil and maintain high active-ingredient percentage
- Salt Stable LS Advanced Base allows for a less-sticky appearance and greater ability to carry the active ingredient into the tissue



# PLANTAR FASCIITIS

**Plantar Fasciitis is a condition caused by the degeneration and inflammation of the plantar fascia where it originates from the heel and is characterized by heel pain with the first few steps after getting out of bed.**

As the condition becomes chronic, the healing process cannot keep up with mechanical demands. The patient is left with irritable micro-tears, scar tissue, thickening, and inflammation of the plantar fascia, leading to chronic pain.

## Symptoms

Heel pain with weight-bearing or walking (hurts when you step out of bed in the morning)

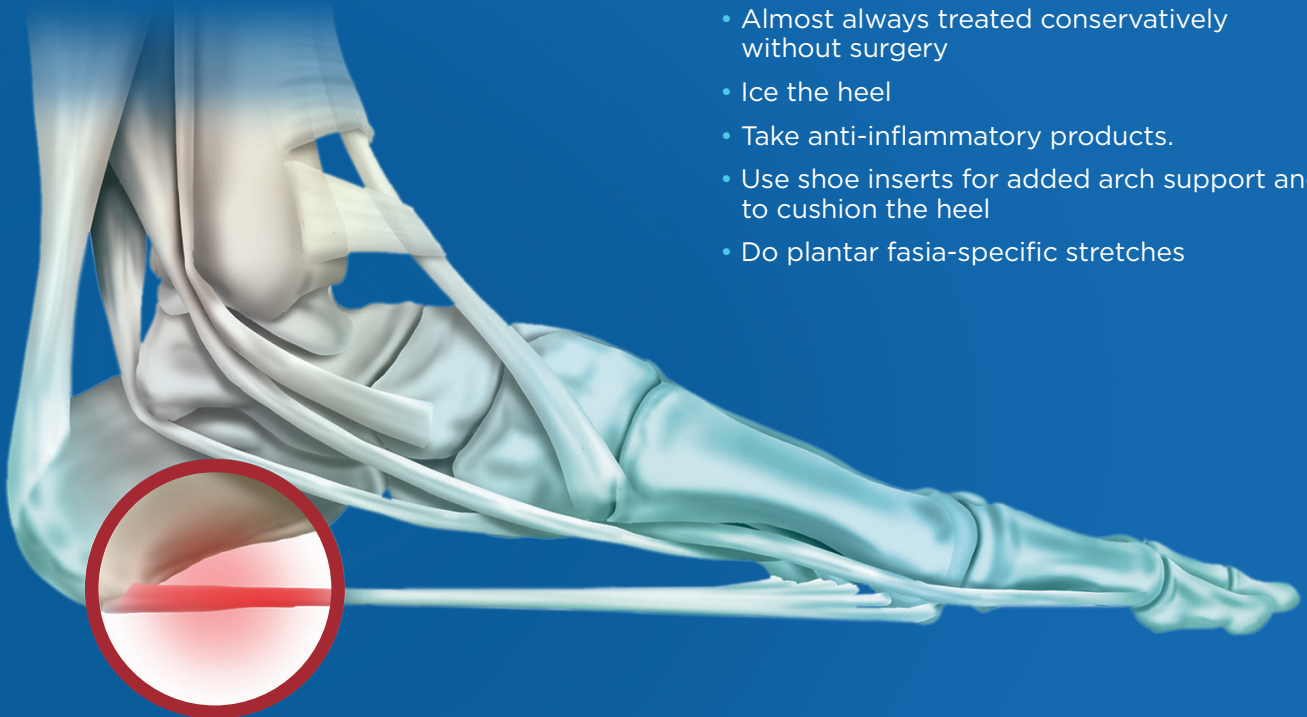
## Causes

Plantar fasciitis can happen spontaneously without specific injury, but you have an increased risk if you:

- Are middle-aged
- Are a woman
- Have a job that requires a lot of walking or standing on hard surfaces
- Are a runner
- Have poor flexion (aren't flexible)

## Treatment

- Almost always treated conservatively without surgery
- Ice the heel
- Take anti-inflammatory products.
- Use shoe inserts for added arch support and to cushion the heel
- Do plantar fascia-specific stretches







## Plantar Fasciitis Kit

### MAXIMIZE OUTCOMES FOR FOOT PAIN

The plantar fascia is a strong support ligament in the foot that receives significant stress with normal daily activities. This stress can strain the plantar fascia and tighten surrounding muscles in the calf and foot. This kit provides the tools necessary for you to reduce painful symptoms from plantar fasciitis and help you recover more quickly.

#### KIT INCLUDES

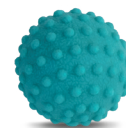
**Compression plantar fascia sleeve:** Wear daily along with the orthotic insole. The combined support accelerates recovery by reducing swelling, pain, and tightness within the plantar muscles.



**Resistance band:** Use twice daily at a minimum. First, before getting out of bed in the morning, attach the band to the ball of your foot and gently stretch your foot and calf by pulling the band toward your body. Perform 10 stretches with your knee held straight, and 10 stretches with your knee slightly flexed, holding each stretch for 10 seconds. This will alleviate the initial discomfort of standing and walking in the morning. Then repeat these stretches in the afternoon, holding each stretch for 20 seconds.



**Foot massage ball:** Use daily, ideally once in the morning for 2-3 minutes just after getting out of bed, and again before going to bed.



#### OPTIONAL ITEMS

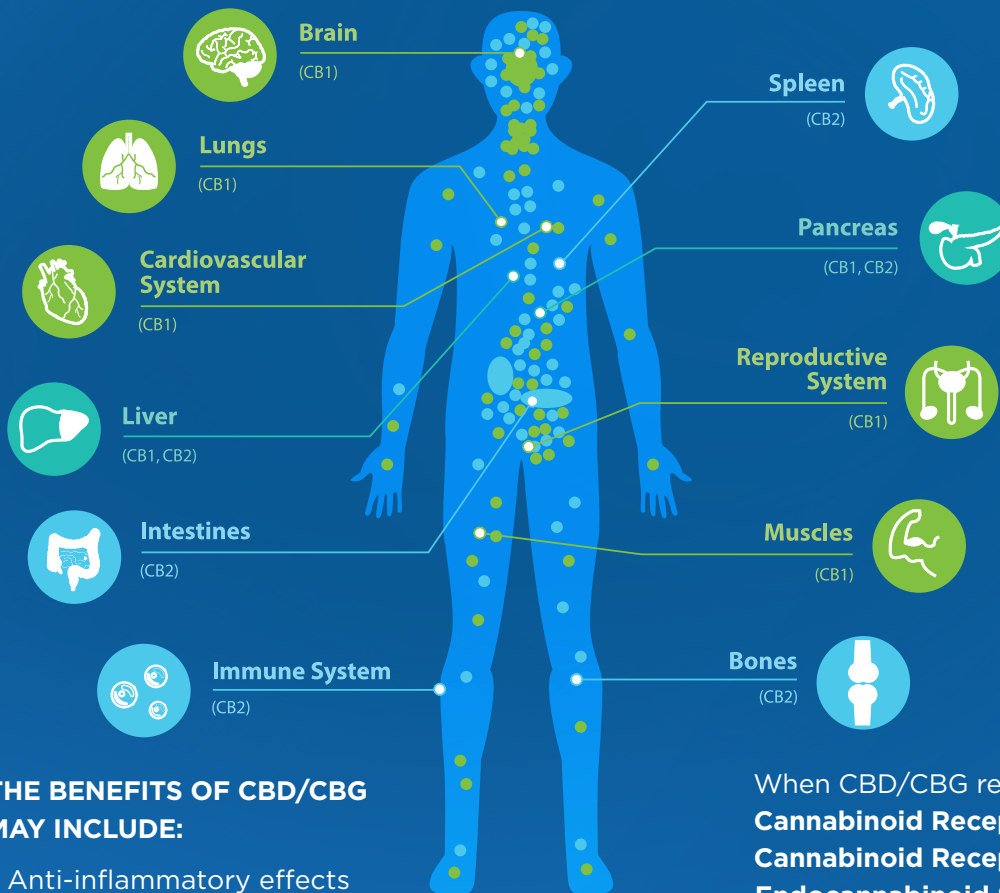


**Topical pain cream:** Your healthcare provider will choose a specific topical pain cream to alleviate your discomfort and accelerate recovery. Please use as directed by your provider. When applying the pain cream, massage it into the painful area for greatest therapeutic benefit. Massaging the target area will help desensitize it to pain and promote more rapid comfort and relief.

**Orthotic insole:** Wear this daily, ideally in a supportive shoe such as an athletic or firm dress shoe.



# THE SCIENCE BEHIND CBD/CBG



**CBG (cannabigerol)** is a cannabinoid present in the hemp plant (*Cannabis sativa*). Known as the “mother” cannabinoid, CBG is the original molecule found within the cannabis plant which over 100 other cannabinoids derive from, including CBD (cannabidiol).

## THE BENEFITS OF CBD/CBG MAY INCLUDE:

- Anti-inflammatory effects
- Neuroprotective properties
- Potent antioxidation

When CBD/CBG reacts with the receptors **Cannabinoid Receptor Type 1 (CB1)** and **Cannabinoid Receptor Type 2 (CB2)**, the **Endocannabinoid System (ECS)** is established. The main function of the ECS is to maintain the body’s homeostasis through the production of CB1 and CB2 receptors.

**CB1 RECEPTORS** are located in the brain, central nervous system, and many other parts of the body. These receptors are involved in:

- Motor activity
- Thinking
- Motor coordination
- Appetite
- Short-term memory
- Pain perception
- Immune cell function

**CB2 RECEPTORS** are found throughout the body on cells associated with the immune system. These receptors are plentiful within:

- Gut, kidneys, pancreas, and liver
- Adipose tissue
- Skeletal muscle
- Bone
- Eyes
- Tumors
- Reproductive system
- Immune system
- Respiratory tract
- Skin
- Central nervous system
- Cardiovascular system

\*The FDA has not evaluated EB-C1, EB-C4 or EB-C5.



## EB-C4™/EB-C5™

### CBD/CBG CREAM FOR OPTIMAL WELLNESS

**ICE-1™** - Proprietary  
transdermal base to  
promote local and  
systemic absorption.

#### EB-C5 INGREDIENTS

Cannabidiol (CBD) ..... 3000mg (3%)  
Cannabigerol (CBG) ..... 3000mg (3%)  
Myrcene ..... 3000mg (3%)  
Beta-caryophyllene ..... 3000mg (3%)  
Arnica ..... 2000mg (2%)  
Methylsulfonylmethane (MSM) ..... 2000mg (2%)

#### EB-C4 INGREDIENTS

Cannabidiol (CBD) ..... 3000mg (3%)  
Myrcene ..... 3000mg (3%)  
Beta-caryophyllene ..... 3000mg (3%)  
Arnica ..... 2000mg (2%)  
Methylsulfonylmethane (MSM) ..... 2000mg (2%)

#### Dosage

Apply 1-4 times per day or as advised by your  
healthcare provider.

\*CBG is featured exclusively in EB-C5. The FDA has not  
evaluated EB-C4 and EB-C5.

EB-C5™ is a broad-spectrum (CBD/CBG)  
transdermal cream combined in an ICE-1™  
(Infused Complex Emulsion) base that drives  
the active ingredients into the tissue and  
bloodstream. EB-C5 contains key active  
ingredients that are commonly used for overall  
health and wellness.

#### THE ENTOURAGE EFFECT

CBD and CBG in combination with terpenes  
and flavonoids provide amplified benefits when  
used in combination to maintain homeostasis in  
the body for optimum wellness.

#### Therapeutic Active Pharmaceutical Ingredient Guide

ACTIVE INGREDIENT	DESCRIPTION
<b>Cannabidiol</b> (CBD)	Modulates the production and efficacy of endocannabinoids + Analgesic Properties - Inflammation
<b>Cannabigerol*</b> (CBG)	Closely mimics the activity of CB1 and CB2 receptors + Neuroprotective Effects - Inflammation
<b>Myrcene</b>	A key terpene that works with CBD to produce the entourage effect - Inflammation
<b>Beta-caryophyllene*</b>	A key terpene that works with CBD to produce the entourage effect - Inflammation
<b>Arnica</b>	A key herb with known medicinal properties; most common ingredient in anti-inflammatory OTC topicals - Inflammation
<b>MSM</b> (Methylsulfonylmethane)	- Oxidative stress - Inflammation
<b>Botanical complex</b> (Camphor-Peppermint- Eucalyptus-Menthol)	+ Cooling effect

+ increase - decrease

[www.EBMmedical.com](http://www.EBMmedical.com) • 29





## EB-C1™

**OPTIMAL  
HEALTH AND  
WELLNESS**

EB-C1™ is a THC-free CBD (Cannabidiol) & CBG (Cannabigerol) oil tincture that provides the full benefits of broad-spectrum cannabidiol.

Our citrus-flavored CBD & CBG oil tincture is extracted from US-grown industrial hemp utilizing innovative farming practices and is manufactured in the United States.

### INGREDIENTS

Cannabidiol (CBD) .....3600 mg  
Cannabigerol (CBG) .....1800 mg

### Dosage

Use 1/2 (0.5ml) dropper one to two times daily or as directed by your healthcare professional. Fill dropper to appropriate dosing line, hold under tongue for 30 seconds and swallow.

### Servings

60 servings per bottle, 1/2 dropperful per serving

**Speak to your healthcare provider to learn if EB-C1 can help with sleep, energy, or mood.**



Formulated by licensed pharmacists. USA hemp-sourced CBD — vegan-friendly, organic ingredients.

Manufactured in compliance with current Good Manufacturing Practices [cGMP].

### CBD/CBG Dosing Chart

	AMOUNT
1.0 mL	= 120mg CBD/60mg CBG
.75 mL	= 90mg CBD/45mg CBG
.50 mL	= 60mg CBD/30mg CBG
.25 mL	= 30mg CBD/15mg CBG

### Therapeutic Active Pharmaceutical Ingredient Guide

ACTIVE INGREDIENT	DESCRIPTION
<b>Cannabidiol<sup>*</sup></b> (CBD)	Modulates the production and efficacy of endocannabinoids + Analgesic Properties - Inflammation
<b>Cannabigerol</b> (CBG)	Closely mimics the activity of CB1 and CB2 receptors + Neuroprotective Effects - Inflammation

This product is not intended to supplement the diet.

\*The FDA has not evaluated EB-C1.

# INDIVIDUALIZED MEDICINE WITH SPECIALTY TOPICALS

## Maximize efficacy and minimize side effects

We partner with pharmacies to offer customized dosages with combinations of multiple ingredients that are easy to apply and individually made for you.



### Micronized USP active pharmaceutical ingredients

- Ideal particle size to maximize tissue penetration
- No crushed tablets or opened capsules



### No substitutions or watered-down formulas

- You receive the exact formulation prescribed, every time



### Affordable and consistent pricing for a true 30-day fulfillment

- No surprises at the pharmacy counter or in copay or EOB documents
- High-quality, low-cost formulations

## Trusted transdermal bases

### Antifungal topical cream

- Quick-drying, non-sticky cream base
- Contains penetration enhancers and natural oils
- Proven to penetrate the nail plate



### SaltStable LS Advanced™ Pain Management Topical Cream

- Off-white, cosmetically elegant cream
- Formulated with silogel — smooth, silky, dry feel (less sticky/tacky)
- Absorption of up to eight active ingredients in one formulation
- Natural ingredients — less irritation



# Now that I have been prescribed an EBM Medical product, what are the next steps?

---

1



Your provider will send your prescription to EBM Medical.

---

2



You will receive a text or email to confirm your order. **To expedite your order, call us at 1-844-360-4095.**

---

3



An EBM representative will contact you to answer your questions and process your payment.

---

4



Within 24 hours, your prescribed formula will be shipped. Standard shipping is always free.

---

5



We will manage your refills by sending a confirmation text and email 10 days before your prescription needs to be refilled.

---

## QUESTIONS?

Contact EBM Support at 1-844-360-4095  
or [support@EBMmedical.com](mailto:support@EBMmedical.com)



[www.EBMmedical.com](http://www.EBMmedical.com)

References available upon request.

Distributed by: ©2023 EBM Medical, LLC | Chesterfield, Missouri 63005 | 06/2023 v42  
Printed in USA | All rights reserved